

PK 23500

Performance

PALFINGER CRANE

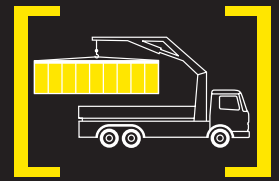


MINIMAL DEAD WEIGHT AND GREAT OUTREACH



MAXIMAL LIFTING CAPACITY

With up to six hydraulic extensions and its impressive lifting moment the PK 23500 *Performance* is big at handling any job. Particularly safe and comfortable to control, it features three stabiliser spreads and – as an option – supports which can be swivelled up automatically.

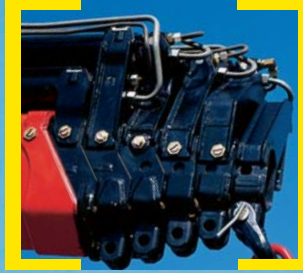


SAFE AND EFFICIENT



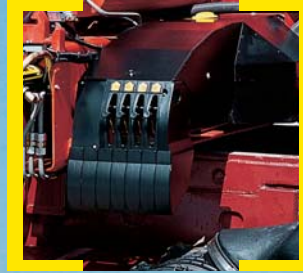
Adjustable slide blocks

These ensure optimal lateral guidance of the extension system.



Functional Design

- Enclosure of the entire electronic system
- Enclosure in the area of the control valve



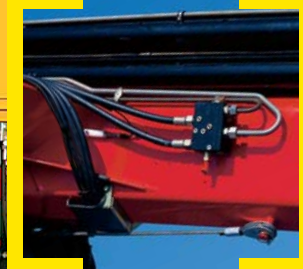
Ergonomic crane control

The operating levers for all crane functions are arranged ergonomically on the console. This facilitates comfortable, efficient working. The control console is mounted so that it is easy to service.



Return oil utilisation

The high speed of the extension system is impressive. It results from return oil utilization feature, which is installed as standard, and the generously dimensioned hydraulic pipes. This makes for increased efficiency during all types of working!



Load-holding valves

They prevent the crane arm from dropping and are mounted as standard on the elevating and knuckle-boom cylinder as well as on the extension arm. The valves are positioned in such a way that they are protected from being damaged.

KTL – the cathodic dip painting

The shot-blasted crane parts are covered in zinc phosphate in an immersion process and coated electro-statically. The subsequent two-component top coating of paint provides a surface protection which in the past was usually only found in the automotive industry.



RELIABLE IN ANY SITUATION



Extension system

The extension cylinders run on rollers.

Height compensation of the extension cylinders.



Hose equipment for accessories

With this option you can provide the oil supply to accessories. The hoses are routed in compact troughs and plastic link chains. They are therefore very well protected.



Internally routed oil ducts

The internally routed oil passages make it possible to have a compact design for the extension system and ensure perfect protection from damage.

Outriggers

The 4.8 m (15' 9") outrigger system installed as standard ensures good stability. As an option a 6.6 m (21' 9") telescopic outrigger is available. The pipework to the support cylinders is internally routed in the outriggers, providing a high level of protection from damage at all times. On request, the outriggers can be supplied with support cylinders that swivel up hydraulically through 180°.

Optional

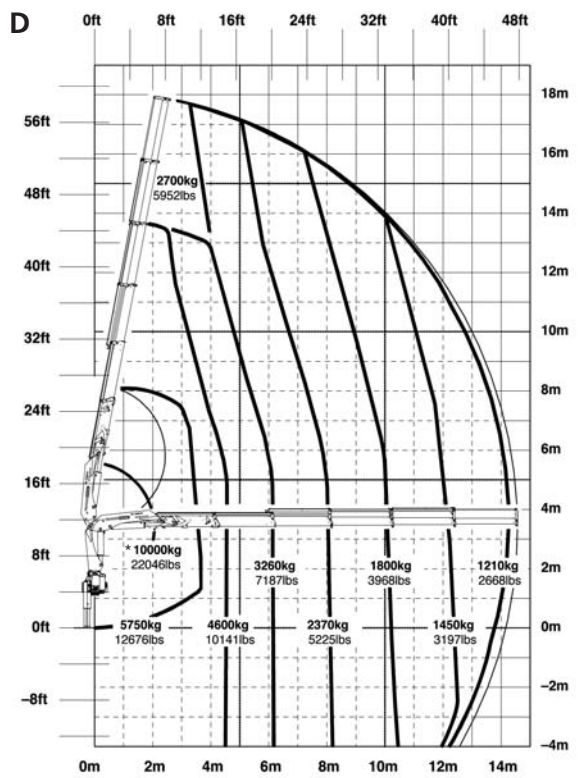
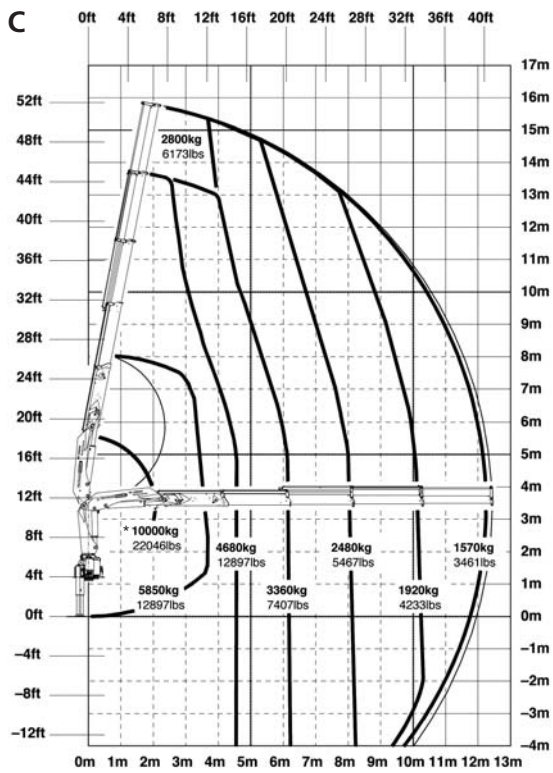
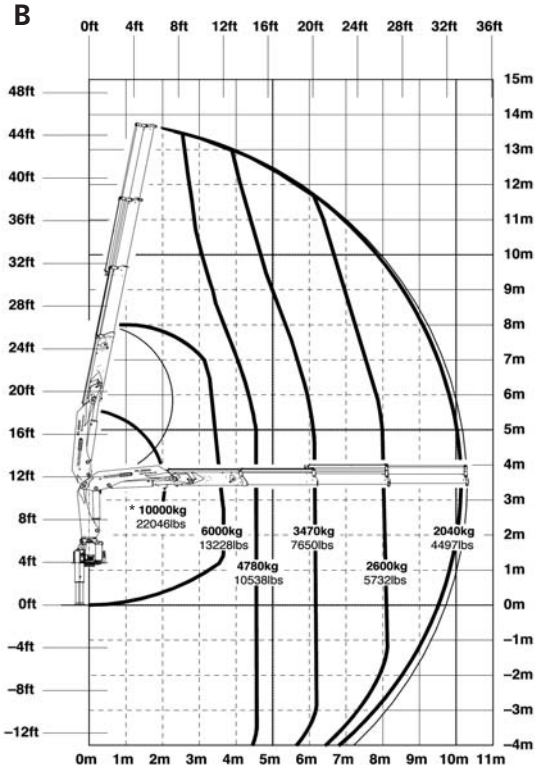
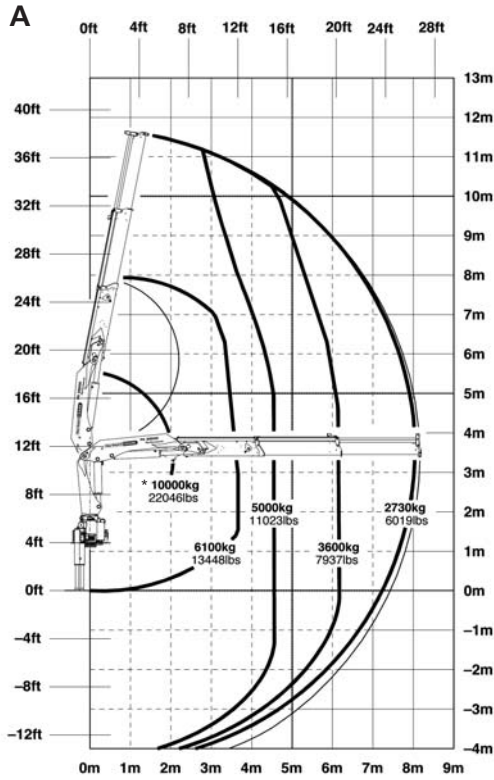
- The radio remote control
- The PALTRONIC 50 electronic control system
- The hydraulic overload protection



Central lubrication

For all grease points on the base frame.

PK 23500 Performance



EQUIPMENT FOR HIGH DEMANDS

Max. lifting capacities

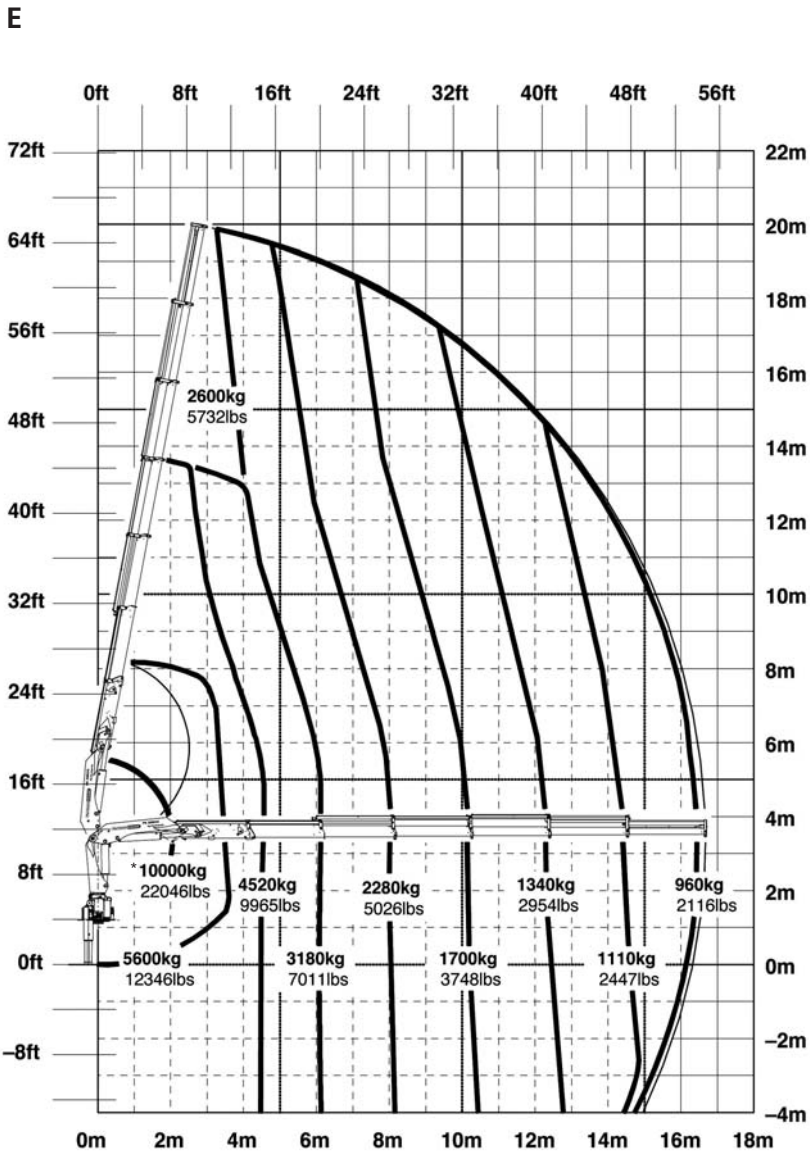
PK 23500 Performance A			
Max. lifting capacities			
Outreach		Capacity	
hydraulic			
4.6 m	15' 1"	48.1 kN/4900 kg	10800 lbs
6.1 m	20' 0"	35.3 kN/3600 kg	7940 lbs
8.0 m	26' 3"	26.8 kN/2730 kg	6020 lbs

PK 23500 Performance B			
Max. lifting capacities			
Outreach		Capacity	
hydraulic			
4.6 m	15' 1"	46.9 kN/4780 kg	10540 lbs
6.1 m	20' 0"	34.0 kN/3470 kg	7650 lbs
8.0 m	26' 3"	25.5 kN/2600 kg	5730 lbs
10.1 m	33' 2"	20.0 kN/2040 kg	4500 lbs
manual			
12.4 m	40' 8"	15.7 kN/1600 kg	3530 lbs
14.6 m	47' 11"	12.9 kN/1310 kg	2890 lbs
16.7 m	54' 9"	9.8 kN/1000 kg	2200 lbs

PK 23500 Performance C			
Max. lifting capacities			
Outreach		Capacity	
hydraulic			
4.6 m	15' 1"	45.9 kN/4680 kg	10320 lbs
6.1 m	20' 0"	33.0 kN/3360 kg	7410 lbs
8.0 m	26' 3"	24.3 kN/2480 kg	5470 lbs
10.1 m	33' 2"	18.8 kN/1920 kg	4230 lbs
12.3 m	40' 4"	15.4 kN/1570 kg	3460 lbs
manual			
14.5 m	47' 7"	12.6 kN/1280 kg	2820 lbs
16.7 m	54' 9"	9.8 kN/1000 kg	2200 lbs
18.7 m	61' 4"	6.1 kN/ 620 kg	1370 lbs

PK 23500 Performance D			
Max. lifting capacities			
Outreach		Capacity	
hydraulic			
4.6 m	15' 1"	45.0 kN/4590 kg	10120 lbs
6.1 m	20' 0"	32.0 kN/3260 kg	7190 lbs
8.0 m	26' 3"	23.2 kN/2370 kg	5220 lbs
10.1 m	33' 2"	17.7 kN/1800 kg	3970 lbs
12.3 m	40' 4"	14.2 kN/1450 kg	3200 lbs
14.4 m	47' 3"	11.9 kN/1210 kg	2670 lbs
manual			
16.6 m	54' 6"	9.8 kN/1000 kg	2200 lbs
18.6 m	61' 0"	6.1 kN/ 620 kg	1370 lbs

PK 23500 Performance E			
Max. lifting capacities			
Outreach		Capacity	
hydraulic			
4.6 m	15' 1"	44.3 kN/4520 kg	9960 lbs
6.1 m	20' 0"	31.2 kN/3180 kg	7010 lbs
8.0 m	26' 3"	22.4 kN/2280 kg	5030 lbs
10.1 m	33' 2"	16.7 kN/1700 kg	3750 lbs
12.3 m	40' 4"	13.1 kN/1340 kg	2950 lbs
14.4 m	47' 3"	10.9 kN/1110 kg	2450 lbs
16.5 m	54' 2"	9.4 kN/ 960 kg	2120 lbs
manual			
18.5 m	60' 8"	6.1 kN/ 620 kg	1370 lbs

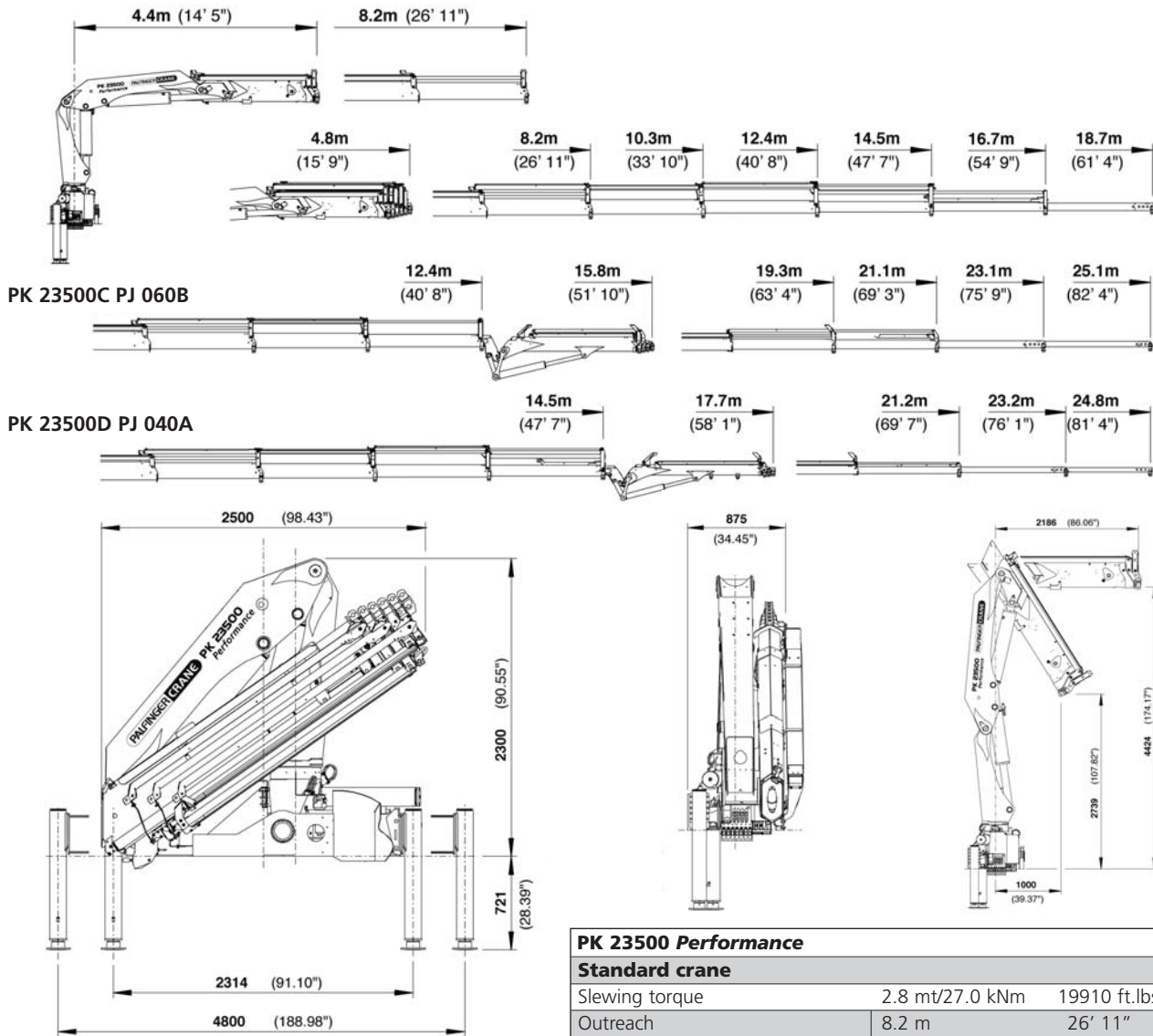


* Heavy load attachment

The outreaches stated are with a boom angle of 20° and are therefore not the maximum.



GREAT OUTREACH FOR DEMANDING JOBS



PK 23500 Performance		
Technical Specifications (EN 12999 H1-B3)		
Max. lifting moment	23.0 mt/226.0 kNm	166630 ft.lbs
Max. lifting capacity	10000 kg/98.1 kN	22050 lbs
Max. hydraulic outreach	16.7 m	54' 9"
Max. manual outreach	18.8 m	61' 8"
Max. outreach (with fly-jib)	25.1 m	82' 4"
Slewing angle	400°	

PK 23500 Performance		
Standard crane		
Slewing torque	2.8 mt/27.0 kNm	19910 ft.lbs
Outreach	8.2 m	26' 11"
Stabilizer spread standard	4.8 m	15' 9"
Stabilizer spread max	6.6 m	21' 9"
Fitting space required	0.88 m	2' 11"
Width folded	2.5 m	8' 2"
Max. operating pressure	300 bar	4350 psi
Recommended pump capacity	from 50 l/min 11.0 imp.gal./min 13.2 US gal./min to 75 l/min 16.5 imp.gal./min 19.8 US gal./min with RC- and LS-system	
Dead weight standard crane	2346 kg	5170 lbs

Executions shown in the leaflet are not always corresponding to standard execution. Country-specific regulations are to be observed upon attachment.



We reserve the right to change design and specification without prior notice.

www.palfinger.com

KP-PK23500M1+E, 03/06